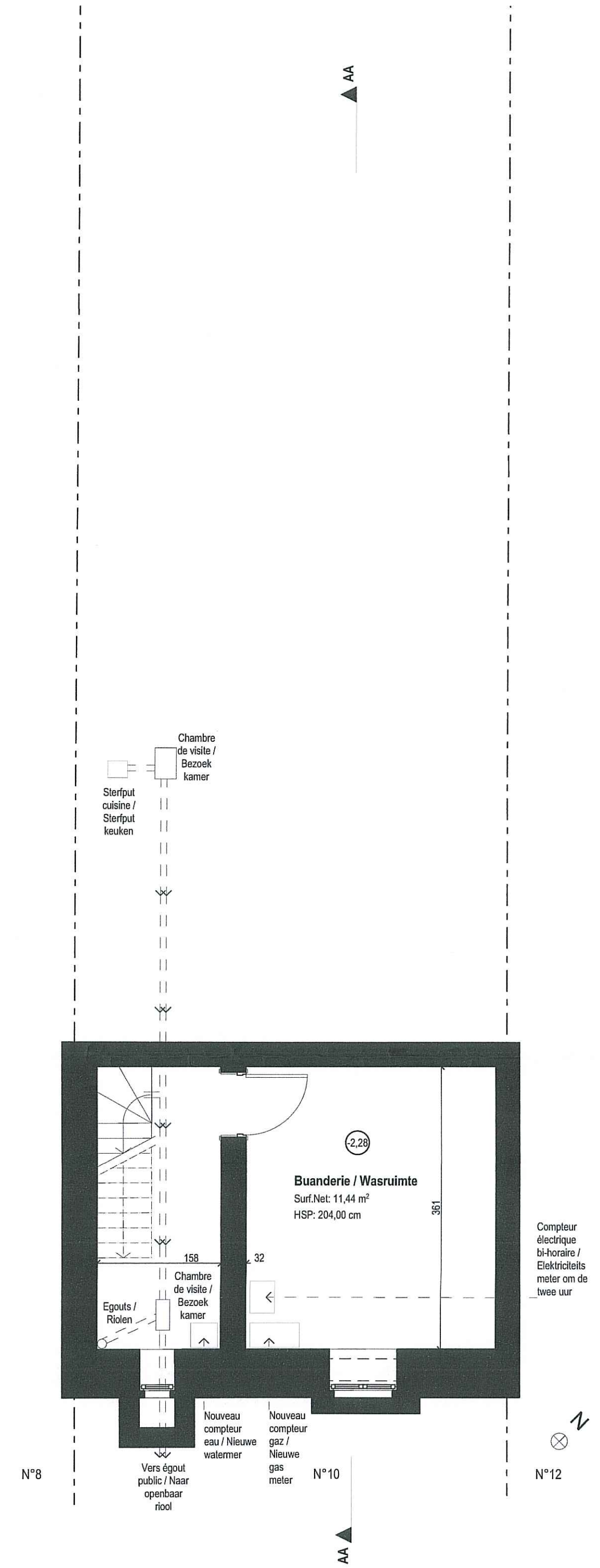
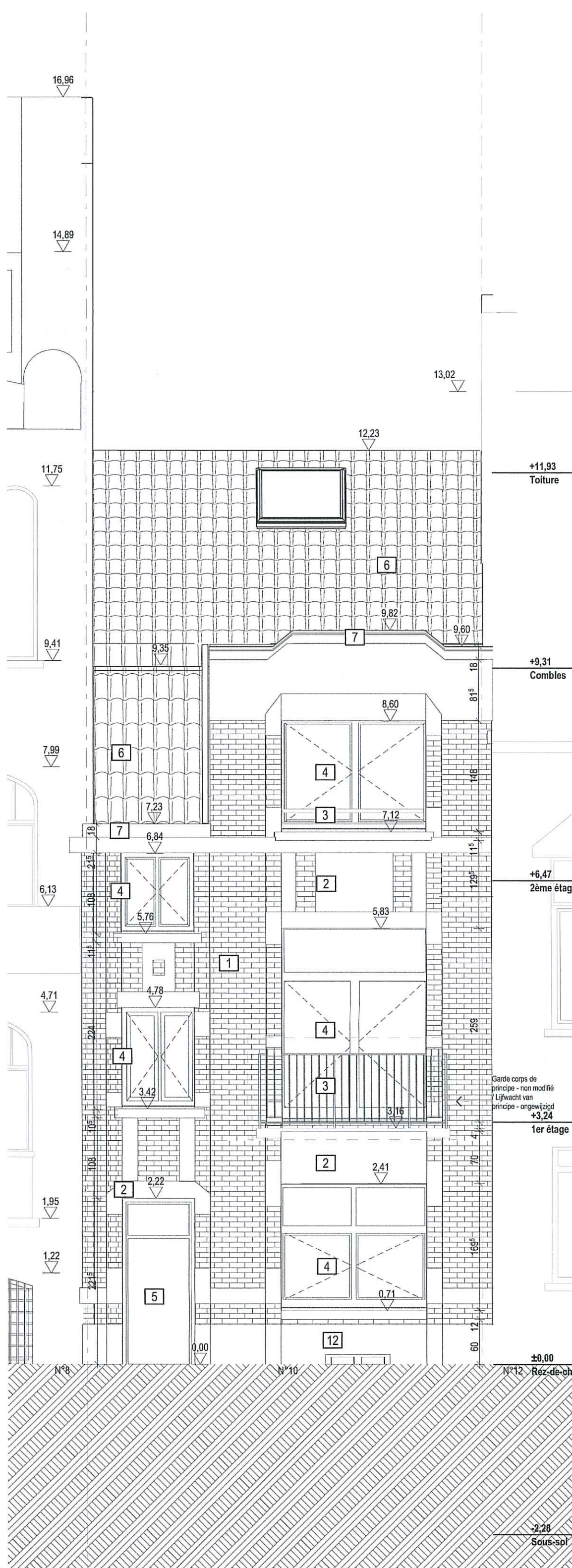


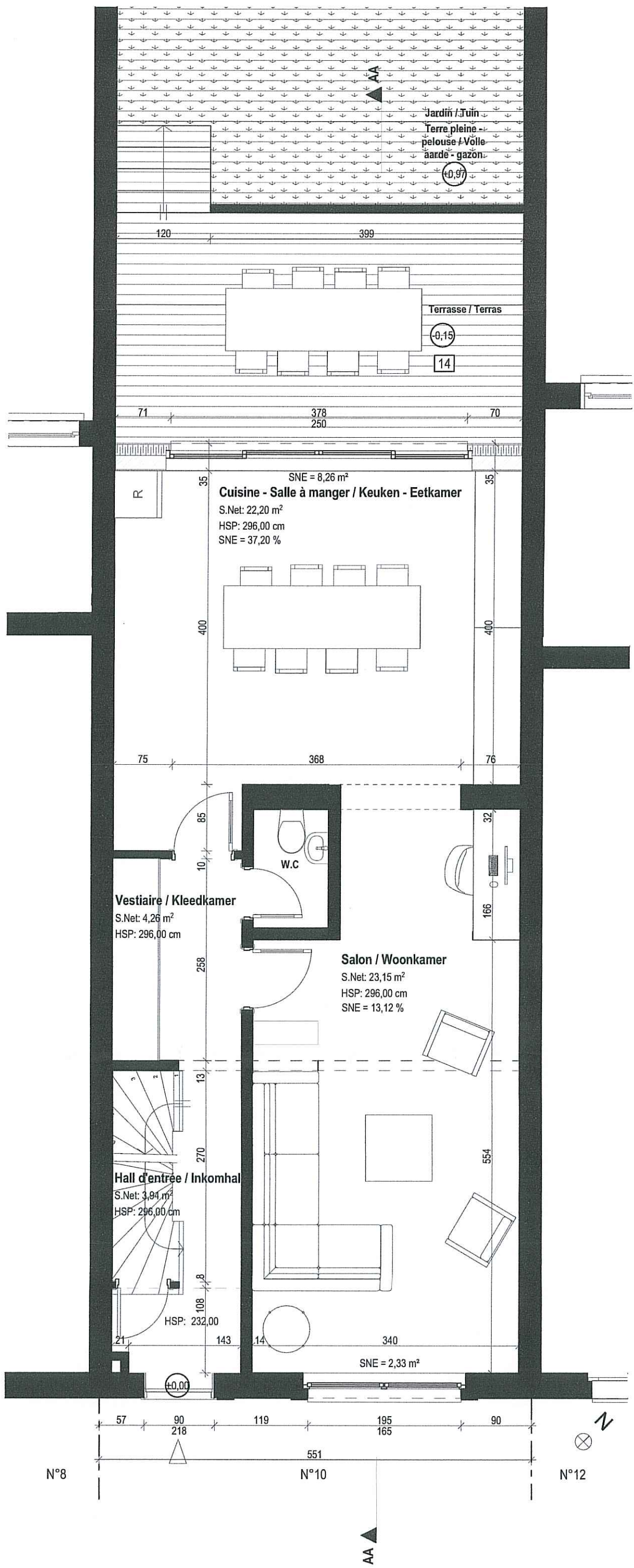
SOUS-SOL / KELDER 1:50



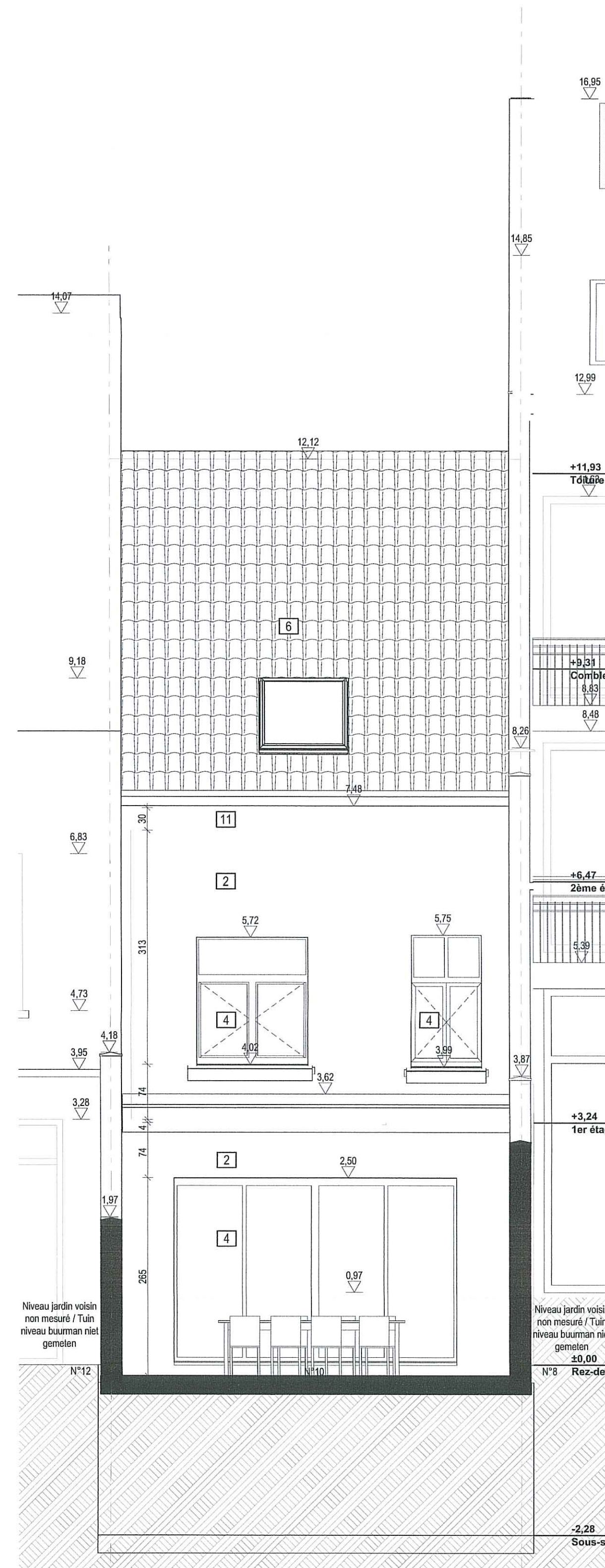
FACADE AVANT - VOORKANT 1:50



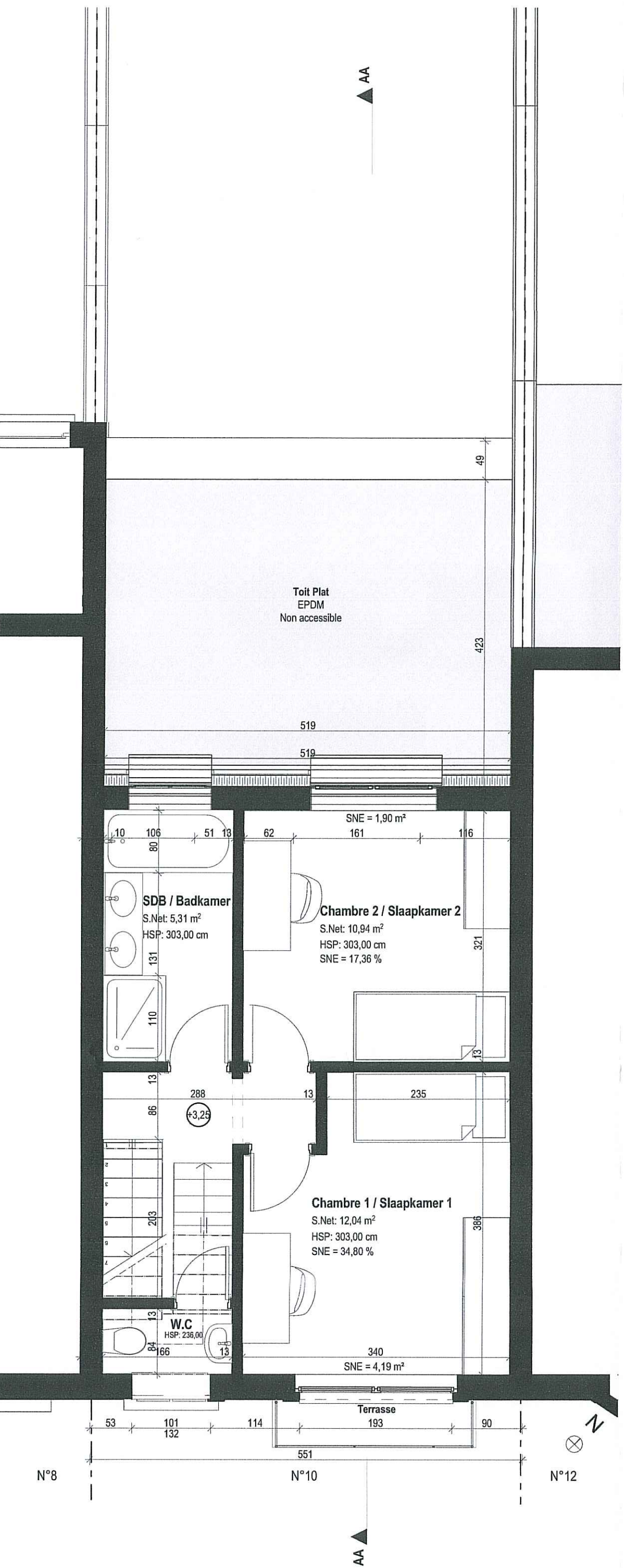
REZ-DE-CHAUSEE / BEGANE GROND 1:50



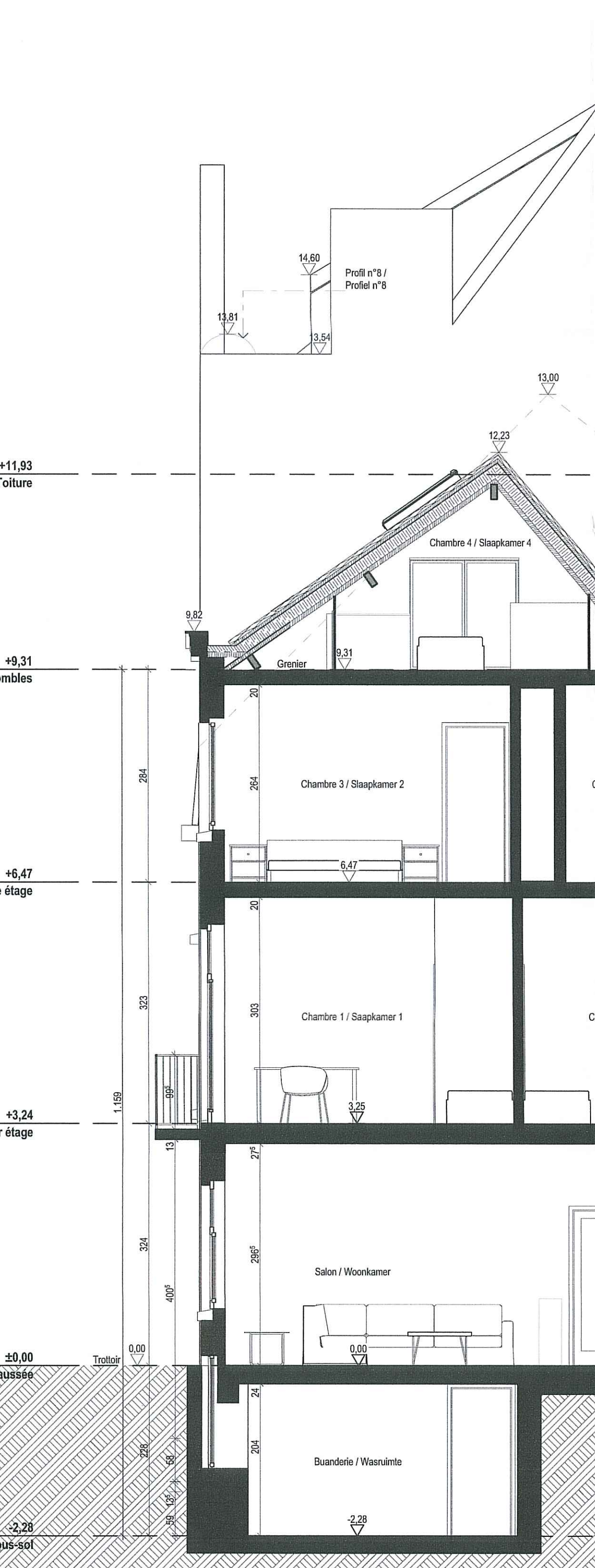
FACADE ARRIERE / DE ACHTERGEVEL 1:50



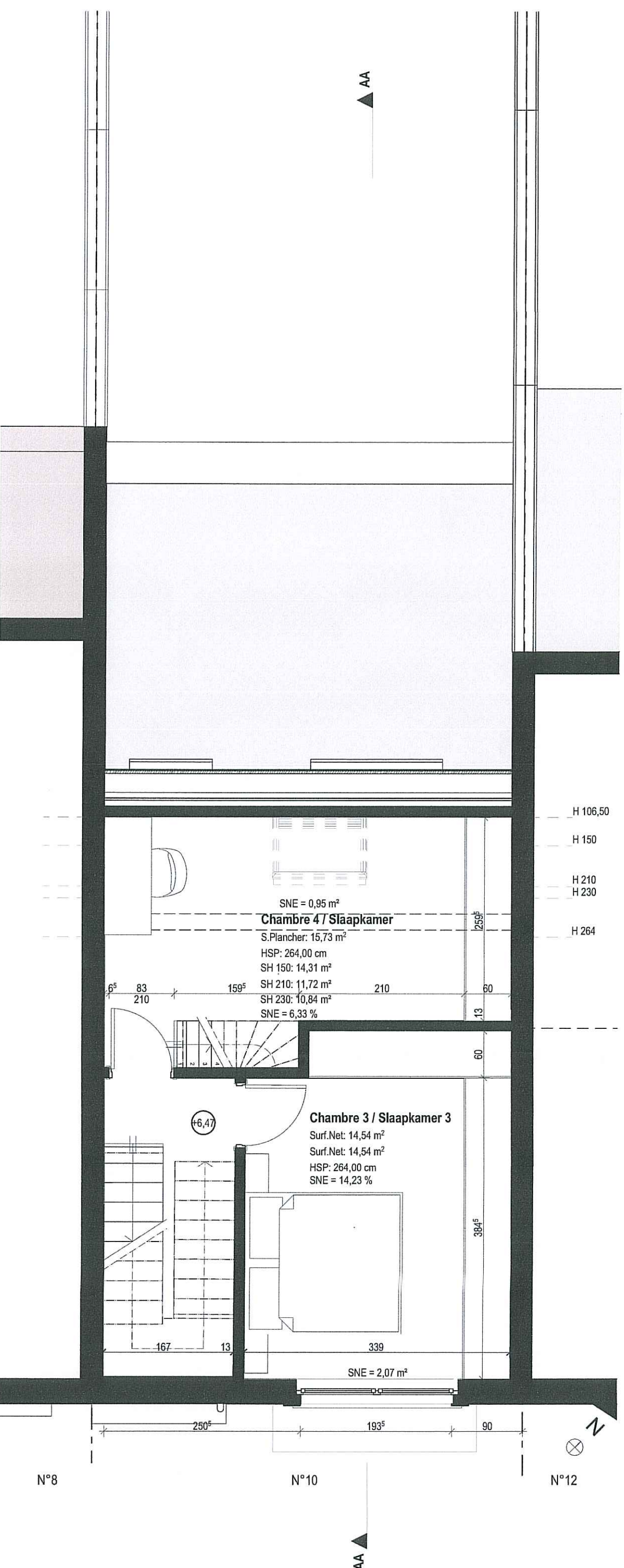
1ER ETAGE / 1E VERDIEPING 1:50



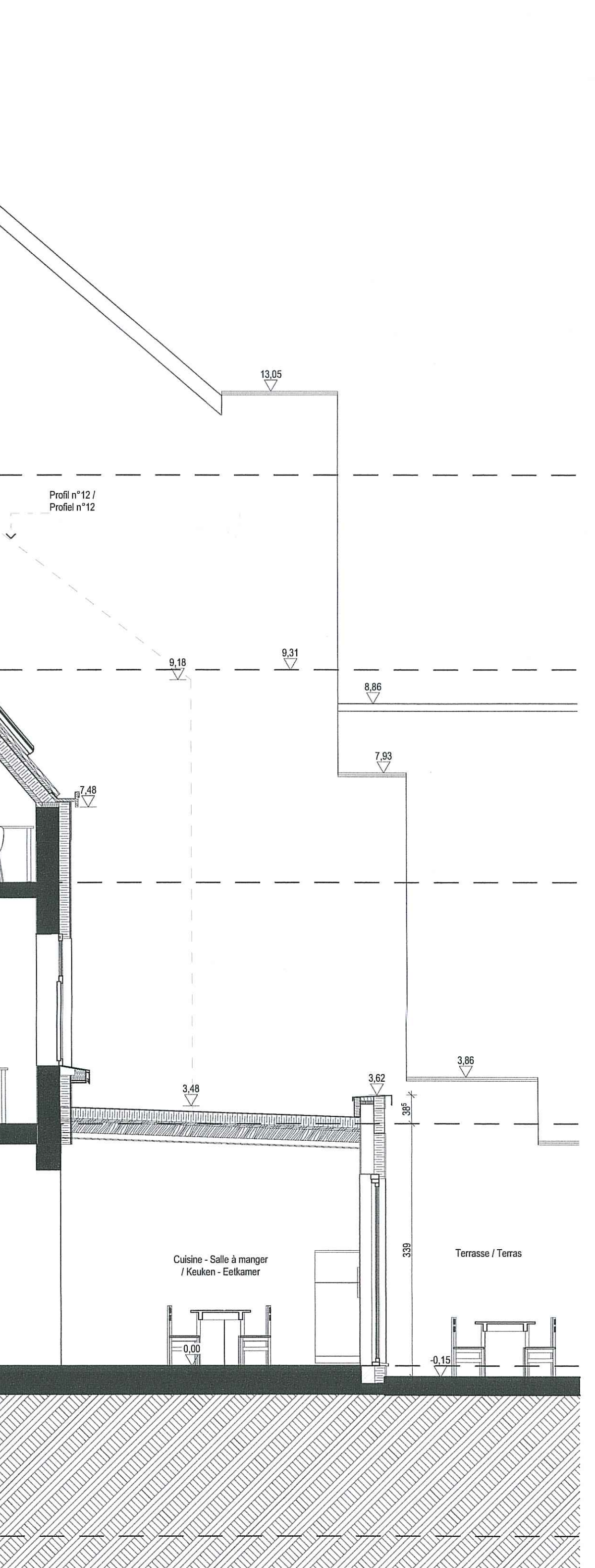
COUPE AA / SECTIE AA 1:50



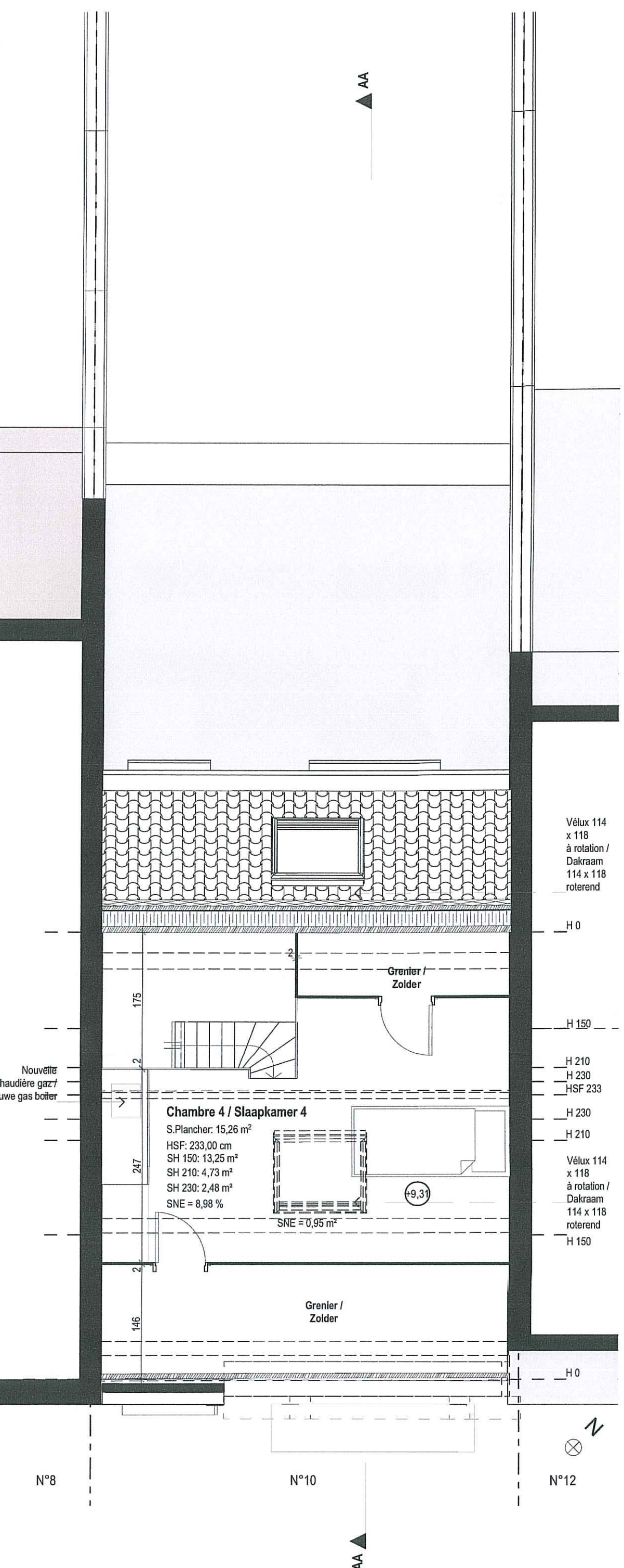
2EME ETAGE / 2E VERDIEPING 1:50



1:50



COMBLES / ZOLDER 1:50



1:50

LEGENDE DES MATERIAUX:	MATERIAAL LEGENDE:
1 Briques - Ton orange	1 Stenen - oranje tint
2 Crépis - Ton blanc	2 Pleisters - Witte loon
3 Acier - Ton gris anthracite	3 Staal - Houtskoolgrijs tint
4 Aluminium - Ton blanc	4 Aluminium - Witte loon
5 Aluminium - Ton blanc	5 Aluminium - Witte loon
6 Terre cuite - Ton rouge	6 Terracotta - Roodtint
7 Bois - Ton blanc	7 Hout - Witte loon
8 DEP PVC - Ton blanc	8 DEP PVC - Witte loon
9 EPDM - Ton noir	9 EPDM - Zwarttint
10 Polycarbonate - Ton gris	10 Polycarbonaat - Grijs tint
11 Zinc - Ton gris	11 Zink - Grijs tint
12 Pierre bleue	12 Arduin
13 Pierre - Ton gris	13 Steen - Grijs tint
14 Bois - Ton marron	14 Hout - Bruinetint